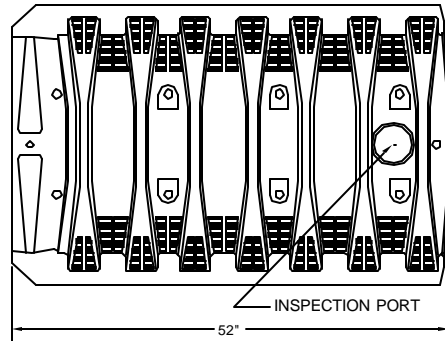
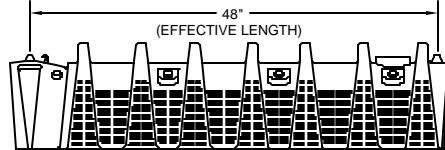


QUICK4 STANDARD CHAMBER

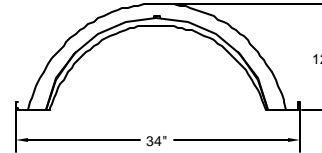
TOP VIEW



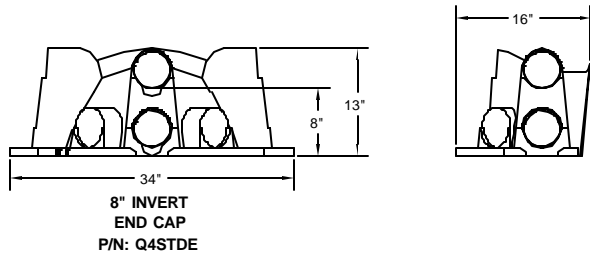
SIDE VIEW



FRONT VIEW

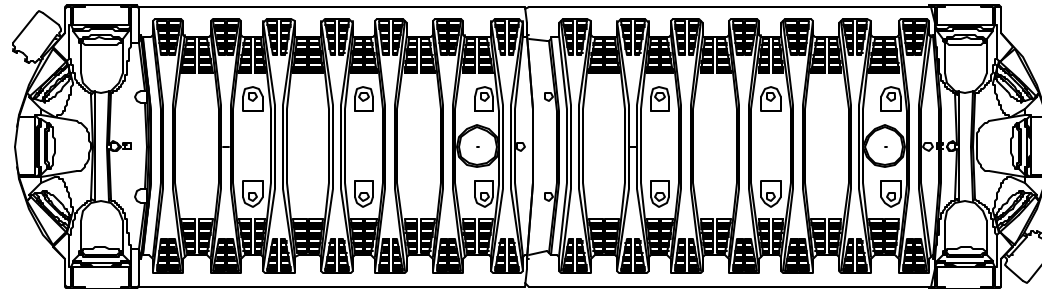


MULTI-PORT END CAP



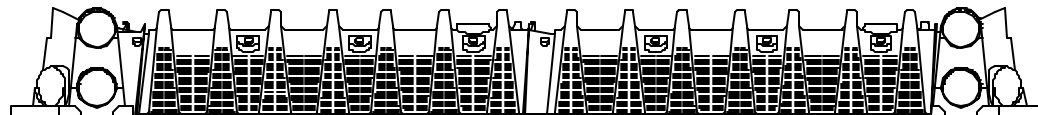
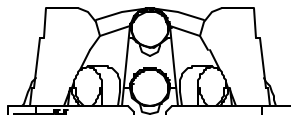
NOMINAL CHAMBER SPECIFICATIONS

SIZE (W x L x H).....	34" x 48" x 12"
EFFECTIVE LEACHING AREA:	
BED.....	PER CODE
TRENCH.....	PER CODE
INVERT ELEVATION.....	8"
STORAGE CAPACITY PER UNIT.....	44.4 GAL



OUTLET

SIDE



INLET

SIDE

